



Parameter	Rating	Units
Blocking Voltage	60	V _P
Load Current	150	mA
Max On-resistance	16	Ω
LED Current to operate	1	mA

Features

- Designed for use in security systems complying with EN50130-4
- Only 1mA of LED current required to operate
- Small 4-Pin SOP Package
- TTL/CMOS Compatible input
- No Moving Parts
- High Reliability
- Arc-Free With No Snubbing Circuits
- 1500V_{rms} Input/Output Isolation
- No EMI/RFI Generation
- Immune to radiated EM fields
- SMD Pick & Place, Wave Solderable
- Tape & Reel Version Available

Applications

- Security
 - Passive Infrared Detectors (PIR)
 - Data Signalling
 - Sensor Circuitry
- Instrumentation
 - Multiplexers
 - Data Acquisition
 - Electronic Switching
 - I/O Subsystems
 - Meters (Watt-Hour, Water, Gas)
- Medical Equipment—Patient/Equipment Isolation
- Aerospace
- Industrial Controls

Description

The CPC1117N is a miniature 1-Form-B solid state relay in a 4-Pin SOP package that employs optically coupled MOSFET technology to provide 1500V_{rms} of input to output isolation. The efficient MOSFET switches and photovoltaic die use Clare's patented OptoMOS[®] architecture. The optically coupled output is controlled by the input's highly efficient GaAlAs infrared LED using Clare's state of the art double molded vertical construction packaging to produce the world's smallest relay. The CPC1117N offers board space savings of at least 20% over the competitor's larger 4-Pin SOP relay. It boasts the industries' lowest input current to operate in its class.

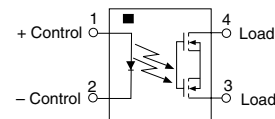
Approvals

- UL Recognized Component
- Certified to EN60950

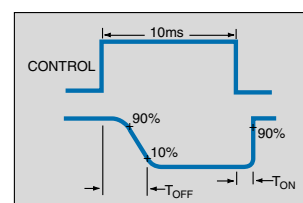
Ordering Information

Part #	Description
CPC1117N	4-Pin SOP (100/tube)
CPC1117NTR	4-Pin SOP (2000/reel)

Pin Configuration



Switching Characteristics of Normally Closed (Form B) Devices



Absolute Maximum Ratings

Parameter	Ratings	Units
Blocking Voltage	60	V _P
Reverse Input Voltage	5	V
Input control Current	50	mA
Peak (10ms)	1	A
Input Power Disipation	70	mW
Total Power Dissipation ¹	400	mW
Isolation voltage Input to Output	1500	V _{rms}
Operational Temperature	-40 to +85	°C
Storage Temperature	-40 to +125	°C

¹ Derate Linearly 3.33 mw / °C

Electrical absolute maximum ratings are at 25°C

Absolute Maximum Ratings are stress ratings. Stresses in excess of these ratings can cause permanent damage to the device. Functional operation of the device at conditions beyond those indicated in the operational sections of this data sheet is not implied.

Electrical Characteristics

Parameter	Conditions	Symbol	Min	Typ	Max	Units
Output Characteristics @ 25°C						
Load Current (Continuous) ¹	I _F =0mA	I _L	-	-	150	mA
Peak Load Current	10ms	I _{LPK}	-	-	350	mA
On-Resistance ²	I _L =120mA	R _{ON}	-	-	16	Ω
Off-State Leakage Current	V _L =60V, I _F =2mA	I _{LEAK}	-	-	1	μA
Switching Speeds						
Turn-On	I _F =2mA, V _L =10V	T _{ON}	-	-	1	ms
Turn-Off	I _F =2mA, V _L =10V	T _{OFF}	-	-	2	ms
Output Capacitance	50V; f=1MHz	C _{OUT}	-	25	-	pF
Input Characteristics @ 25°C						
Input Control Current ³	I _L =120mA	I _F	1	-	-	mA
Input Dropout Current	-	I _F	0.3	0.9	-	mA
Input Voltage Drop	I _F =5mA	V _F	0.9	1.2	1.4	V
Reverse Input Current	V _R =5V	I _R	-	-	10	μA
Common Characteristics @ 25°C						
Capacitance Input to Output	-	-	-	1	-	pF

¹ Load current derates linearly from 100mA @ 25°C to 70mA @85°C.

² Measurement taken within 1 second of on time.

³ For applications requiring high temperature operation (greater than 60°C) an LED drive current of 10mA is recommended.

Manufacturing Information

Soldering

Recommended soldering processes are limited to 260°C component body temperature for 10 seconds.

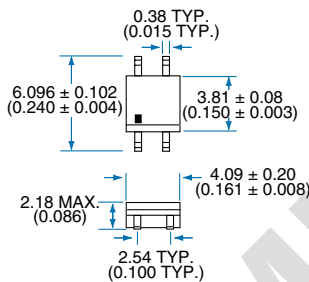
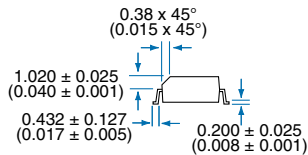


Washing

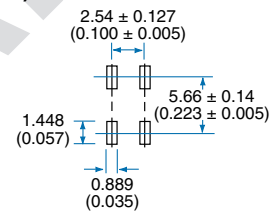
Clare does not recommend ultrasonic cleaning or the use of chlorinated solvents.

Mechanical Dimensions

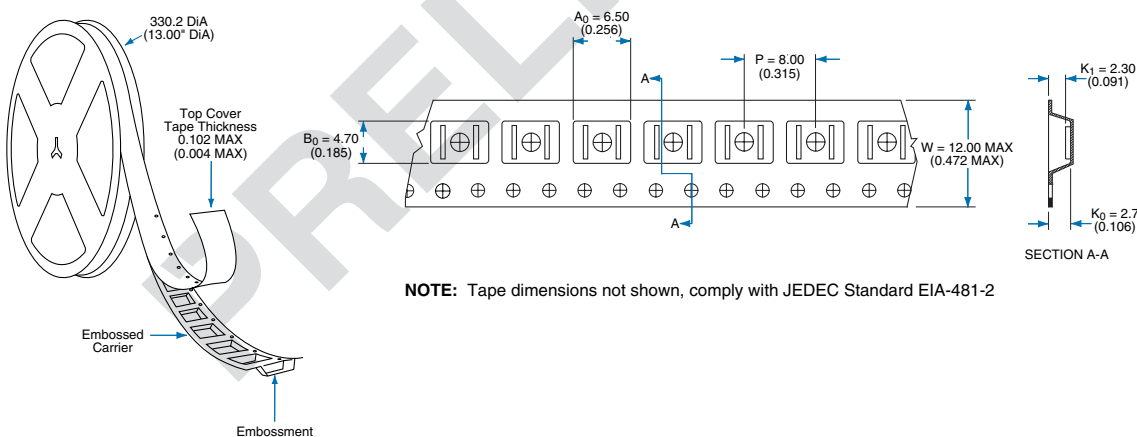
4-Pin SOIC Narrow ("N" Suffix)



PC Board Pattern (Top View)



Tape and Reel Packaging for 4-pin SOP package



NOTE: Tape dimensions not shown, comply with JEDEC Standard EIA-481-2

Dimensions:
mm
(inches)

For additional information please visit our website at: www.clare.com

Clare, Inc. makes no representations or warranties with respect to the accuracy or completeness of the contents of this publication and reserves the right to make changes to specifications and product descriptions at any time without notice. Neither circuit patent licenses nor indemnity are expressed or implied. Except as set forth in Clare's Standard Terms and Conditions of Sale, Clare, Inc. assumes no liability whatsoever, and disclaims any express or implied warranty, relating to its products including, but not limited to, the implied warranty of merchantability, fitness for a particular purpose, or infringement of any intellectual property right.

The products described in this document are not designed, intended, authorized or warranted for use as components in systems intended for surgical implant into the body, or in other applications intended to support or sustain life, or where malfunction of Clare's product may result in direct physical harm, injury, or death to a person or severe property or environmental damage. Clare, Inc. reserves the right to discontinue or make changes to its products at any time without notice.